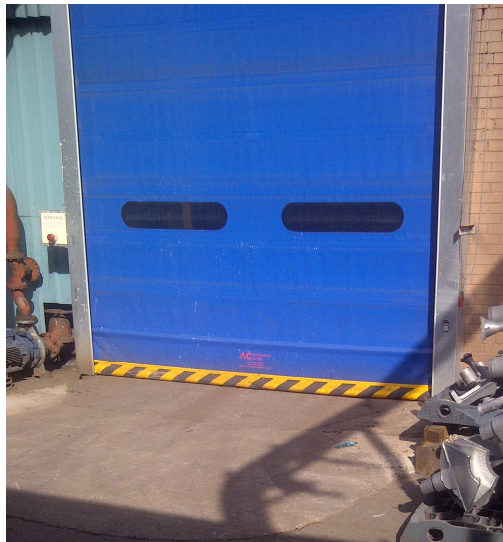




PROJECT: Foundry, Leeds

PRODUCT: High Speed Fold Up Doors, 1No. 4000mm(W) x 3500mm(H),
1No. 3600mm(W) x 3600mm(H)

The project involved supply & installation of 2No. High Speed Fold Up Doors. Blue colour curtain with 2No. vision panels and black & yellow safety chevrons to the bottom rail.



Activation of the doors are via induction loop sensors, inside & outside. Cutting of the loop slots and civil works were also carried out by A&C Maintenance Ltd.

Due to the limited headroom inside the building the doors were mounted externally and included a motor cover for protection against the weather.

